

SA709

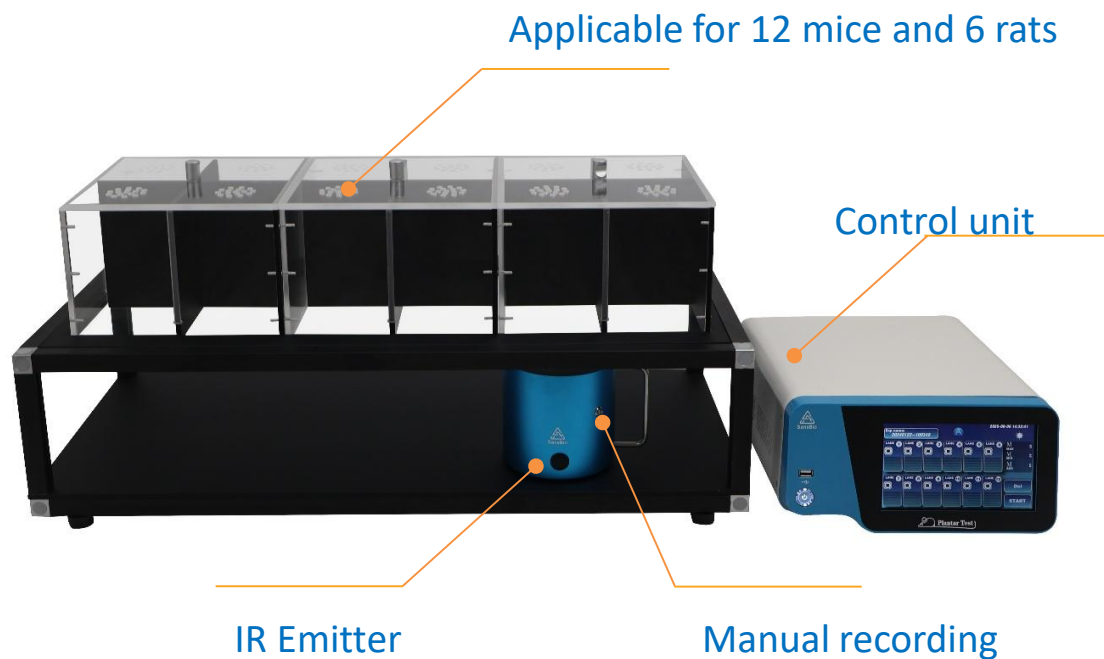
Plantar Test

Hargreaves Apparatus

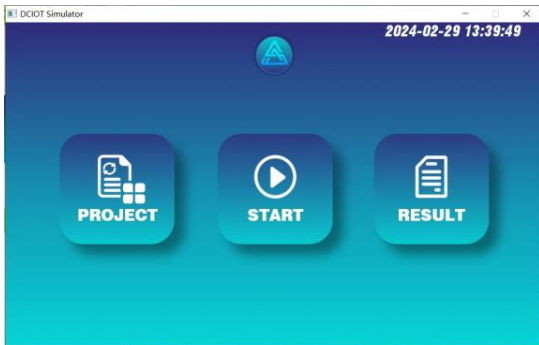


Hargreaves Plantar test is widely used to test the thermal stimuli responses in the study of analgesic drugs in pharmacological experiments. Experiments are easy to perform as a rodent's hind paw is exposed to a beam of radiant heat through a transparent glass surface using plantar analgesia meter. The latency to withdraw to the heat stimulus is recorded as the time for paw withdrawal in both injured and uninjured hind paws.

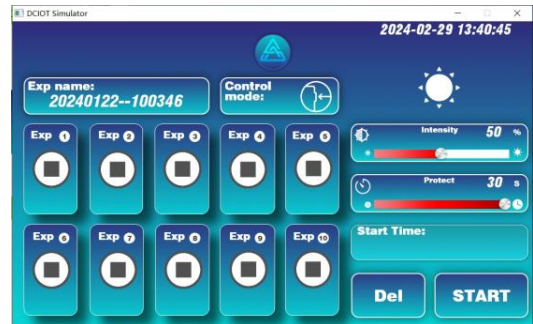
Our Plantar test adopts microcomputer control method to obtain the pain threshold time. The device contains an emitter/detector vessel, software controller, glass panel and animal enclosures. It can be used on 12 mice, 6 rats and other animals (cats, rabbits) unrestrained.



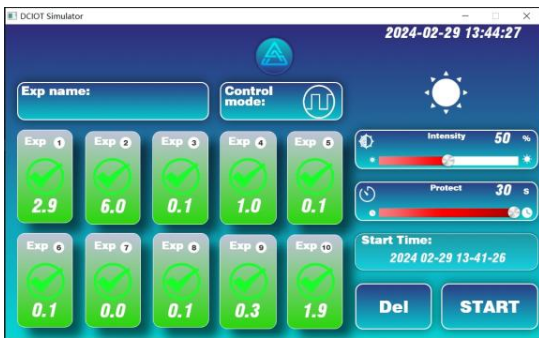
Software



Start



Experiment



Finish



Result



Animal Info

SA709 Plantar Test

Features

- Suitable for 12 mice and 6 rats' simultaneous simulation.
- Foot pedal to measure the pain threshold time of plantar thermal stimulation in free state.
- Adopts double convex lens focusing technology, enabling precise targeted heat stimulation.
- 5-100% light intensity adjustment range, can be adjusted precisely according to the experiment.
- Power: 0W-150W, adjustment 1.5W stepwise.
- Time of irradiation can be flexibly set according to the irradiation intensity, to protect animals from being burned.
- Can be triggered by external 3.3V–5V high-level signals and has TTL signal output.
- Equips with high-quality filter and anti-reflection lenses, effectively filtering out visible light and maximizing thermal radiation, optimizing experimental results while reducing visual interference to operators.
- 7-inch IPS capacitive touch screen with high resolution and quick response, ensuring smooth and intuitive operation.
- Large memory with 5000 data.

SA709 Plantar Test

Specification

- Animal modular enclosures for up to 12 mice and 6 rats simultaneous simulation.
- 7" LCD touch screen to set parameters (light intensity, thresholds, etc.), real time data display.
- Infrared light as stimulus.
- Power: 0W-150W, adjustment 1.5W stepwise.
- 5-100% heat intensity adjustment.
- Maximum Illumination time adjustable to the second (0.01-16s).
- Measurement mode: Manual
- Cut-off timing: from 5 to 100 seconds.
- Timing accuracy: 0.01s.
- Calibration with I.R. Radiometer is optional.
- TTL I/O: Support external 3.3V-5V high level signal trigger, Input/Output TTL signal.
- Power: AC 110-220 VAC, 50-60Hz, 150W
- Sound level: <40dB

Data Operation

- Exportable data through USB disk into.CSV file for easy analysis.
- External thermal printer is supplied optional to provide real-time data printing.

Physical Info:

- Platform with high temperature glass and transparent design, easy to operate, clean and avoid animal distraction.
- Working platform:(L) 80 cm x (W) 40 cm x (H) 17cm
- Acrylic animal enclosure (L) 62 cm x (W) 21 cm x (H) 20cm (for 6 Rats or 12 Mice)
- Weight (control unit): 5kg

